



# innerbus

Enterprise Log Management  
& Analytics

## LogQuest Install Guide

Version 5.0

LogQuest Install Guide

Version 5.0, 2007

Copyright © 2001-2007 Innerbus Co., Ltd.

The information in this document is subject to change without notice.

Without limiting the rights under copyright, no part of this document is reproduced, stored in or introduced into a system, or transmitted in any form or by any means (Electronic, Photocopying, Recording, or Otherwise), or for any purpose, without the written permission of the Innerbus Co., Ltd.

## Table of Contents

1.	About This Guide .....	4
1.1	Notes.....	4
2.	Part I : Install Innerbus LogQuest VF.....	4
2.1	Installation Requirements .....	4
2.2	Installing Innerbus LogQuest VF .....	4

## 1. About This Guide

This guide provides instructions for installing and uninstalling Innerbus LogQuest VF product for the operating system Windows 98 / XP / 2000, 2003.

This guide includes information for users and advanced users, the technical details, procedures for successfully installing and uninstalling Innerbus LogQuest VF product in a Windows based Computer System for a small business or corporate environment.

### 1.1 Notes

- This guide assumes that you have a working knowledge of Windows operating system.
- LogQuest VF : LogQuest Verification

## 2. Part I : Install Innerbus LogQuest VF

### 2.1 Installation Requirements

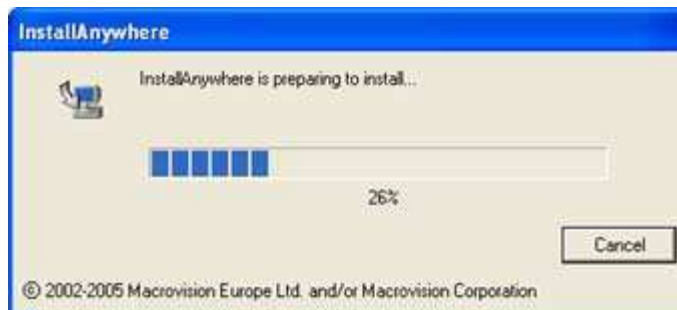
The following provides system requirements for installing Innerbus LogQuest VF product.

- Operating System: Microsoft® Windows® 98 / XP / 2000 / 2003
- Hardware:
  - Intel® Pentium® 4, Intel Centrino®, Intel Xeon®, or Intel Core™ Duo (or compatible) processor
  - 1GB RAM
  - 200MB of available hard-disk space

### 2.2 Installing Innerbus LogQuest VF

To install Innerbus LogQuest VF, read following details and then proceed installing Innerbus LogQuest VF.

- 1) Execute Innerbus LogQuest VF installation file, i.e. "Innerbus\_LogQuest\_VF\_v5.exe"
- 2) The following **InstallAnywhere** window is displayed, where you have to wait for few seconds.



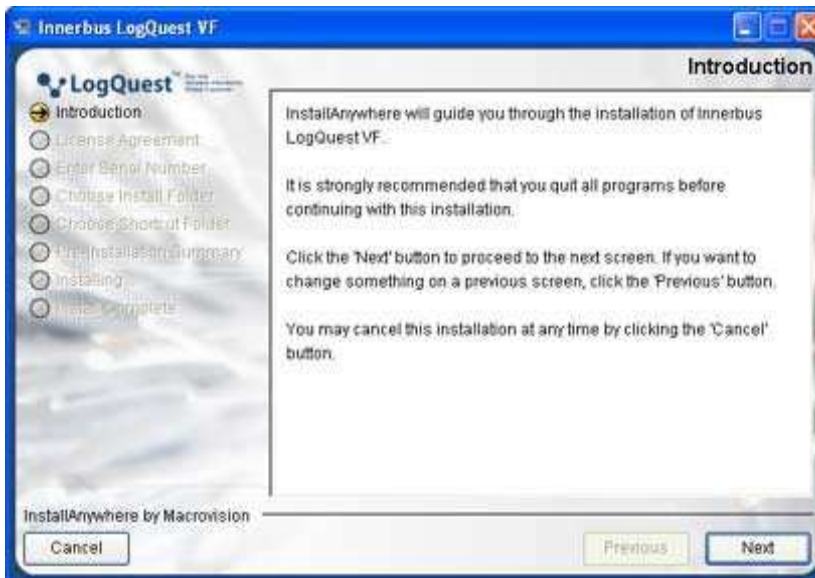
- 3) Now, the following window is displayed.



Select "English" from the drop-down combo box and then click OK button to proceed/continue installing Innerbus LogQuest VF in English language, as shown below.



4) The following **Introduction** window is displayed, as shown below.



To proceed click **Next** button

5) The following License Agreement window is displayed, as shown below.



To accept terms of license in the **License Agreement** window, select  **I accept the terms of the License Agreement** and then click **Next** button

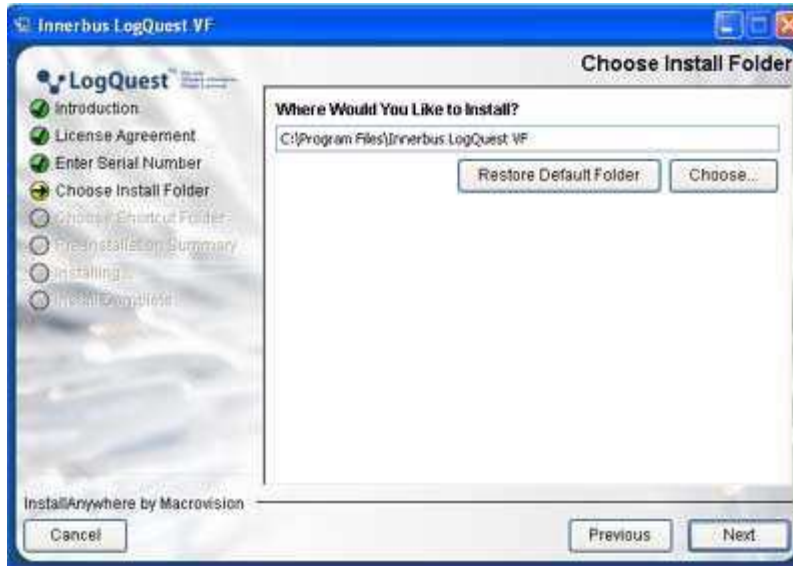
6) The following **Enter Serial Number** window is displayed, as shown below.



**If you are trial user, simply click the “Next” Button leave the text box blank.**

Or type the serial number that is provided along with Innerbus LogQuest VF Product and then click **Next** button in the **Enter Serial Number** window.

7) The following Choose Install Folder window is displayed, as shown below.



Select Choose... button to install Innerbus LogQuest VF in a required path based on your requirement.

Select Restore Default Folder, if you want to install in the default folder

8) The following Choose Shortcut Folder window is displayed, as shown below.



I select and then click **Next** button in the **Choose Shortcut Folder** window

9) The following Pre-Installation Summary window is displayed



Read the instruction under **“Please Review the Following Before Continuing:”**.

After verifying - **“Please Review the Following Before Continuing:”**, click **Install** button.

10) The following Installing Innerbus LogQuest VF window is displayed, where you have to wait for few seconds.



11) As a result the **Install Complete** window is displayed, as shown below.



Now Innerbus LogQuest VF has been installed successfully, click **Done** button.

**Thank you for using LogQuest VF**

**If there is anything we can do to further assist you, please tell us.**

**Please visit <http://bbs.logcenter.net>**